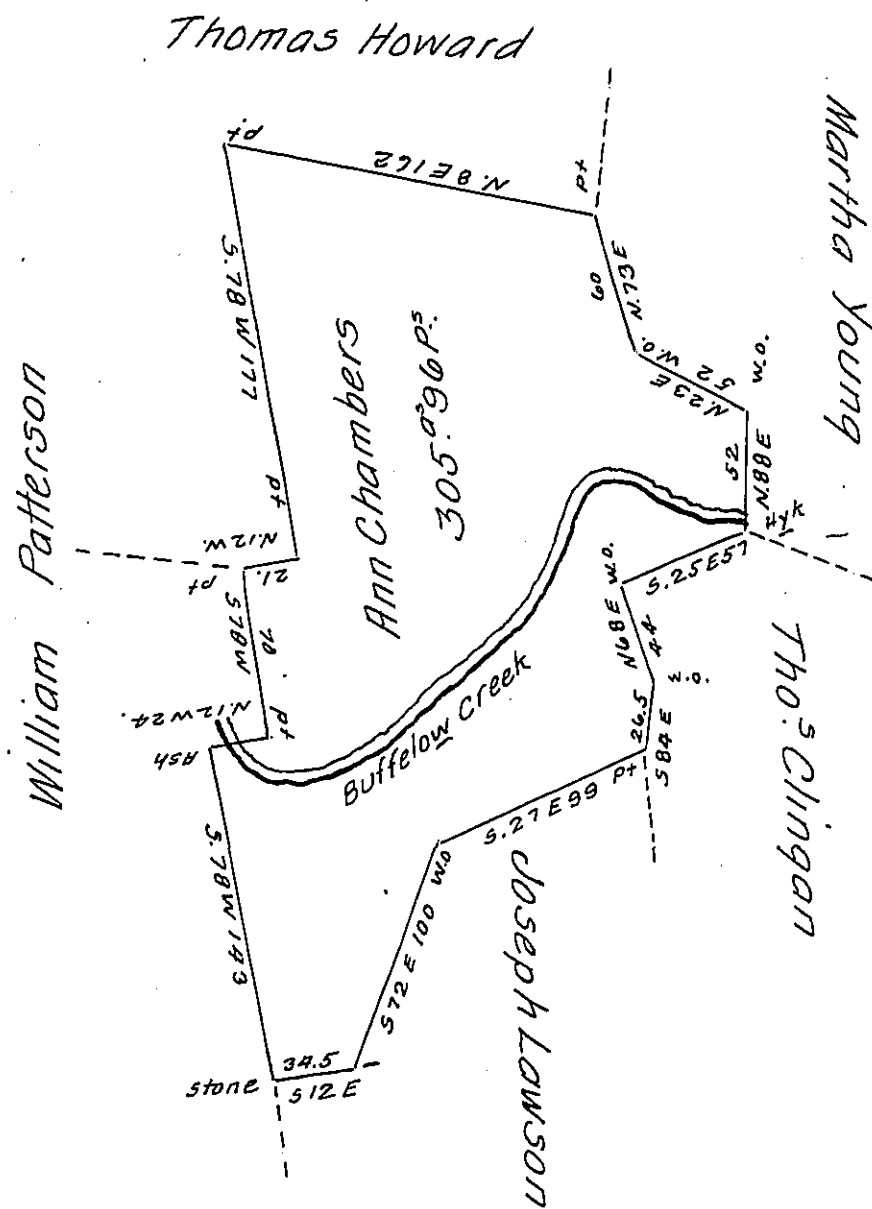


N. 820



Situate in Kelly township Union (late Berks) County. Surveyed the 2^d day of May 1832 by Virtue of an Order granted to Ann Chambers dated the 3^d day of April 1769. N. 820. Containing three hundred and five Acres & Ninety Six perches with the Usual Allowance of Six Per Cent. &c. The above described tract of land was Surveyed the 7th of August 1769 for ~~David~~^{John} Emrick in pursuance of his Order dated 3^d April 1769. N. 223. Now in the possession of George Kremer & Flavel Clingan - And held in right of David Emrick

To Jacob Spangler Esq. }
 Surveyor General } Mr. J. N. Hayes -

Appl. N. 1912. Gersham Silver, for same land.

John Emerick Pat^d

IN TESTIMONY that the above is a copy of the original remaining on file in the Department of Internal Affairs of Pennsylvania, made conformably to an Act of Assembly approved the 16th day of February, 1833, I have hereunto set my Hand and caused the Seal of said Department to be affixed at Harrisburg, this nineteenth day of October 1908,

Henry A. Houch
 Secretary of Internal Affairs.